



— HYINDUSTRIES —



HY Industry Co.,Ltd.

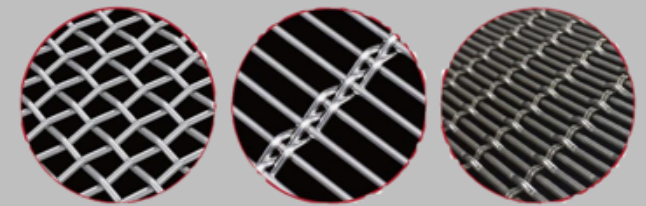
HY Industry Co.,Ltd.

ADD: 1607, Changjiang Road No.161, Yantai E.T.D.Z. 264006, Shandong, China.

WEBSITE: www.hyindustry.com

EMAIL: marketing@hyindustry.com

TEL: 0086-535-6501817

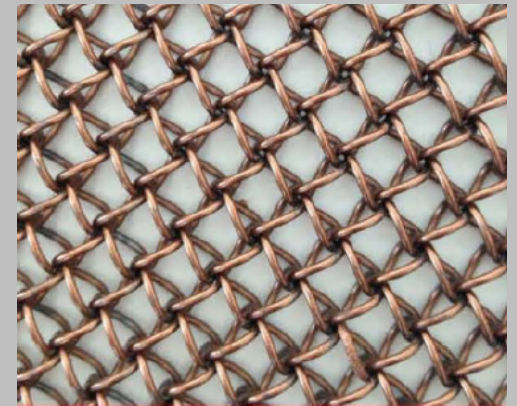


HYINDUSTRIES

WIRE MESH PRODUCTS



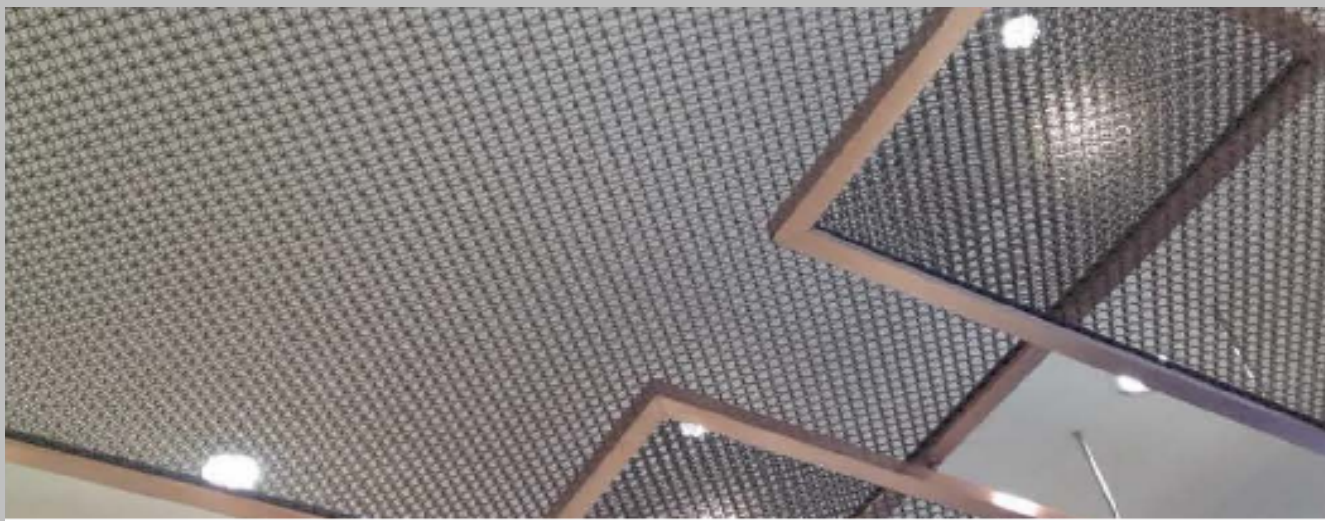
APPLICATION: SCREEN



HY-F1510

HY Industry Co.,Ltd. Architectural mesh is woven by stainless steel wire, aluminium copper and or other metals materials. it has become increasingly popular for engineering and design, due to its remarkable versatility and easy adaptability.

Because of the strength and aesthetic appeal of stainless steel architectural mesh, it offers new and versatile fields of applicaiton in architecture. It can be used as external facades, balustrade, staircase cladding & screens, sun screens & ceiling, interiors decoration, metal curtains, room dividers, etc.



APPLICATION: CEILING

Manufactured with noncorroding, high grade AISI 316 stainless steel., our no maintenance Woven wire drapery offers an exceptional range of woven metal fabrics designed, engineered and manufactured specifically for the architecture community. Our fabrics are produced in various weight and weaves, and degrees of transparency and flexibility and are suitable for both interior and exterior applications. Suitable in a wide range of situations including exteriors facades, wall coverings, column cladding, sunshades and canopies, gates, elevator cabs, stairs and balustrades, partition screens, and many other applications.

APPLICATION: DECORATION SCREEN





HY-1238-SCC

Material: Stainless steel
Warp Diameter: 1.2mm x 2
Warp pitch: 17.5mm
Weft Diameter: 2mm
Weft pitch: 3.8mm
Weight: 7.95kg/m²
Openarea: 43%
Mesh th ickness: 3.3mm



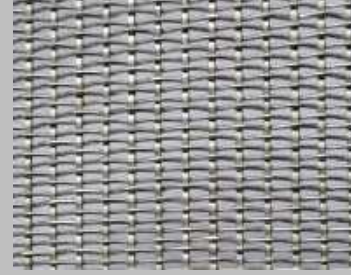
HY-6213-SCC

Material: Stainless steel
Warp Diameter: 1.2mm x 2
Warp pitch: 17.5mm
Weft Diameter: 2mm
Weft pitch: 5mm
Weight: 6.15kg/m²
Openarea: 51%
Mesh th ickness: 4.2mm



HY-2176-SCC

Material: Stainless steel
Warp Diameter: 1.5mm
Warp pitch: 17.5mm
Weft Diameter: 2mm
Weft pitch: 1.5mm
Weight: 10.98kg/m²
Open area: 0%
Mesh thickness: 4.7mm



HY-M2176-SCC

Material: Stainless steel
Warp Diameter: 1mm
Warp pitch: 3mm
Weft Diameter: 2mm x 1 mm
Weft pitch: 7mm
Weight: 9kg/m²
Open area: 9.5%
Mesh thickness: 3mm



HY-3135-SCC

Material: Stainless steel
Warp Diameter: 2mm
Warp pitch: 9mm
Weft Diameter: 1.8mm
Weft pitch: 4mm
Weight: 7.96kg/m²
Openarea: 44%
Mesh th ickness: 3.2mm



HY-3135G-SCC

Material: Stainless steel
Warp Diameter: 2mm
Warp pitch: 9mm
Weft Diameter: 1.4mm
Weft pitch: 4mm
Weight: 7.96kg/m²
Openarea: 44%
Mesh thickness: 3.2mm



HY-4135-SCC

Material: Stainless steel
Warp Diameter: 2.5mm
Warp pitch: 20mm
Weft Diameter: 2.5mm
Weft pitch: 5mm
Weight: 9.92kg/m²
Openarea: 25%
Mesh thickness: 5mm



HY-5483-SCC

Material: Stainless steel
Warp Diameter: 3mm x 2
Warp pitch: 20mm
Weft Diameter: 3mm x 2mm
Weft pitch: 7mm
Weight: 5.6kg/m²
Openarea: 27.3%
Mesh th ickness: 3.3mm



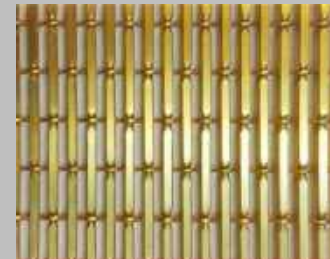
HY-2510-SCC

Material: Stainless steel
Warp Diameter: 1.5mm x 3mm
Warp pitch: 24mm
Weft Diameter: 1.6mm
Weft pitch: 4mm
Weight: 5.6kg/m²
Open area: 45.5%
Mesh th ickness: 4.5mm



HY-6276-SCC

Material: Stainless steel
Warp Diameter: 2mm
Warp pitch: 12.7mm
Weft Diameter: 3mm
Weft pitch: 17.5mm
Weight: 5.26kg/m²
Open area: 79%
Mesh thickness: 6mm



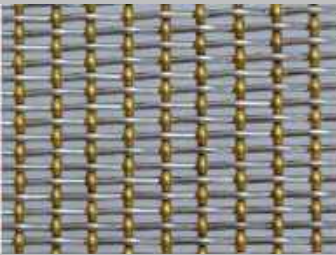
HY-6010-ACC

Material: Aluminum
Warp Diameter: 1.5mm
Warp pitch: 4mm
Weft Diameter: 2mm
Weft pitch: 17.5mm
Weight: 2.6kg/m²
Openarea: 45.7%
Mesh th ickness: 3mm



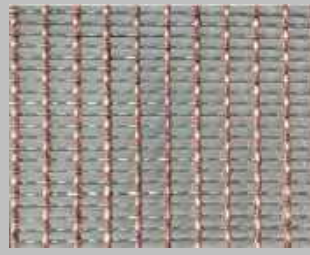
HY- D2175-SCC

Material: Stainless Steel
Warp Diameter: 1.5mm x 1 mm x 2
Warp pitch: 2mm
Weft Diameter: 17.5mm
Weft pitch: 8.16kg/m²
Openarea: 0%
Mesh thickness: 4.5mm



HY-1654-CSCC

Material: Stainless steel&Copper
Warp Diameter: 1.35mm
Warp pitch: 2.5mm
Weft Diameter: 1.6mm x 1
Weft pitch: 5.4mm
Weight: 7.64kg/m²
Openarea: 32%
Mesh th ickness: 3.2mm



HY-0815-CSCC

Material: Stainless steel& Red copper
Warp Diameter: 0.8mm
Warp pitch: 2.88mm
Weft Diameter: 1.5mm
Weft pitch: 7.25mm
Weight: 4.1kg/m²
Open area: 53.9%
Mesh th ickness: 2.5mm



HY-Z2176-SCC

Material: Stainless steel
Warp Diameter: 2mm
Warp pitch: 17.5mm
Weft Diameter: 1.5mm
Weft pitch: 4mm
Weight: 5.38kg/m²
Openarea: 58%
Mesh th ickness: 3.05mm



HY-F1510-SCC

Material: Stainless steel
Wire Diameter: 1.5mm
Wire pitch: 10mm
Weft pitch: 2.75kg/m²
Open area: 75%
Mesh thickness: 12mm



HY-5875-SCC

Material: Stainless steel
Warp Diameter: 1 x 4mm
Warp pitch: 10mm
Weft Diameter: 2mm
Weft pitch: 6mm
Weight: 6.1kg/m²
Openarea: 40%
Mesh thickness: 5mm



HY-T3B2CSCC

Material: Stainless steel& Copper
Warp Diameter: 2mm x 2
Warp pitch: 10mm
Weft Diameter: 2mm x 3
Weft pitch: 10mm
Weight: 14.22kg/m²
Open area: 32%
Mesh thickness: 6mm



HY-1513-SCC

Material: Stainless steel Weft pitch: 3mm
 Warp Diameter: 1.5mm x 3 Weight: 5.3kg/m²
 Warp pitch: 20mm Open area: 36.4%
 Weft Diameter: 5mm x 1mm Mesh thickness: 2.5mm



HY-1513G-SCC

Material: Stainless steel Weft pitch: 3mm
 Warp Diameter: 1.5mm x 3 Weight: 5.3kg/m²
 Warp pitch: 20mm Open area: 36.4%
 Weft Diameter: 5mm x 1mm Mesh thickness: 2.5mm



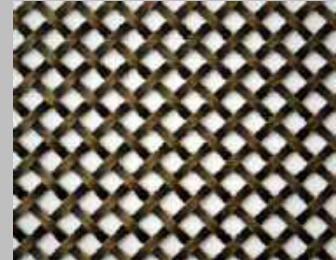
HY-3185G-SCC

Material: Stainless steel Weft pitch: 8mm
 Warp Diameter: 1mm x 2 Weight: 3.5kg/m²
 Warp pitch: 34mm Open area: 72%
 Weft Diameter: 1mm x 2 Mesh thickness: 2mm



HY-712X-SCC

Material: Stainless steel Weight: 14kg/m²
 Flat No.s: 1 Open area: 17.4%
 Flat Diameter: 1.5 x 7mm Mesh thickness: 3mm
 Flatpitch: 12mm



HY-1510G-SCC

Material: Stainless steel Weight: 8.6kg/m²
 Flat No.s: 1 Open area: 42.2%
 Flat Diameter: 1.5 x 3.5mm Mesh thickness: 3mm
 Flatpitch: 10mm



HY-2157-SCC

Material: Stainless steel Weight: 4.5kg/m²
 Flat No.s: 1 Open area: 59%
 Flat Diameter: 1.2 x 3mm Mesh thickness: 3mm
 Flatpitch: 13mm



HY-7543-SCC

Material: Stainless steel Weft pitch: 14mm
 Warp Diameter: 3mm x 4 Weight: 10.3kg/m²
 Warp pitch: 75mm Open area: 42%
 Weft Diameter: 4mm Mesh thickness: 8.5mm



HY-3162-SCC

Material: Stainless steel Weft pitch: 3.5mm
 Warp Diameter: 1.6mm Weight: 6.7kg/m²
 Warp pitch: 20mm Open area: 60%
 Weft Diameter: 1.2mm Mesh thickness: 9.2mm



HY-3540-SCC

Material: Stainless steel Weft pitch: 13.5mm
 Warp Diameter: 2.45mm x 3 Weight: 8.68kg/m²
 Warp pitch: 100mm Open area: 66.8%
 Weft Diameter: 4mm Mesh thickness: 8.9mm



HY-2027-SCC

Material: Stainless steel Weight: 8.1kg/m²
 Flat No.s: 1 Open area: 25%
 Flat Diameter: 1.2 x 2.5mm Mesh thickness: 2.5mm
 Flatpitch: 6mm



HY-3012-SCC

Material: Stainless steel Weight: 9.38kg/m²
 Flat No.s: 1 Open area: 42.2%
 Flat Diameter: 2.5mm Mesh thickness: 3mm
 Flatpitch: 8.5mm



HY-3150-SCC

Material: Stainless steel Weight: 6.68kg/m²
 Flat No.s: 1 Open area: 59%
 Flat Diameter: 1 x 3mm Mesh thickness: 3.2mm
 Flatpitch: 6mm



HY-4311-SCC

Material: Stainless steel Weft pitch: 15mm
 Warp Diameter: 3mm x 3 Weight: 8.54kg/m²
 Warp pitch: 105mm Open area: 64.5%
 Weft Diameter: 4mm Mesh thickness: 10mm



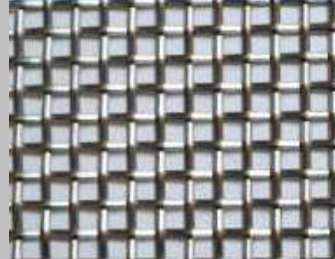
HY-3259-SCC

Material: Stainless steel Weft pitch: 12mm
 Warp Diameter: 2.5mm x 3 Weight: 6.08kg/m²
 Warp pitch: 90.5mm Open area: 68.8%
 Weft Diameter: 3mm Mesh thickness: 5.5mm



HY-3821-SCC

Material: Stainless steel Weft pitch: 17.5mm
 Warp Diameter: 1mm x 2mm Weight: 4kg/m²
 Warp pitch: 15mm Open area: 60.2%
 Weft Diameter: 1.2mm x 2.5 Mesh thickness: 4.4mm



HY-1593-SCC

Material: Stainless steel Weft pitch: 5mm
 Warp Diameter: 0.6 x 1.75mm Weight: 3.36kg/m²
 Warp pitch: 5mm Open area: 41%
 Weft Diameter: 0.6 x 1.75mm Mesh thickness: 2mm



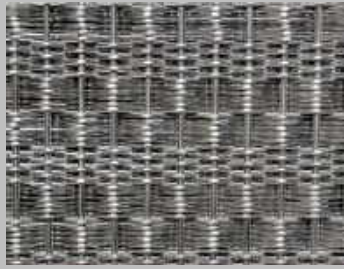
HY-1593G-SCC

Material: Stainless steel Weft pitch: 5mm
 Warp Diameter: 0.6 x 1.75mm Weight: 3.36kg/m²
 Warp pitch: 5mm Open area: 41%
 Weft Diameter: 0.6 x 1.75mm Mesh thickness: 2mm



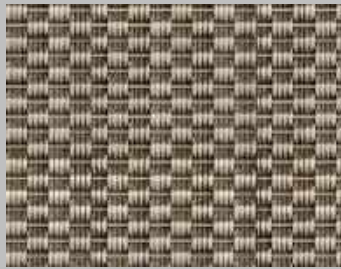
HY-5512-SCC

Material: Stainless steel Weft pitch: 5mm
 Warp Diameter: 2mm Weight: 8.37kg/m²
 Warp pitch: 5mm Open area: 34.9%
 Weft Diameter: 1 x 2mm Mesh thickness: 4mm



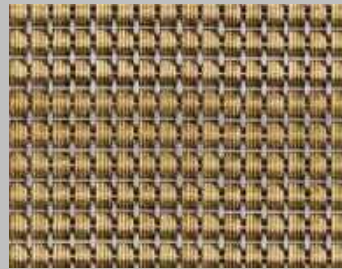
HY-2018-SCC

Material: Stainless steel
Warp Diameter: 2mm
Warp pitch: 8mm
Weft Diameter: 1.5mm
Weft pitch: 1.5mm
Weight: 12.7kg/m²
Open area: 0%
Mesh thickness: 4.5mm



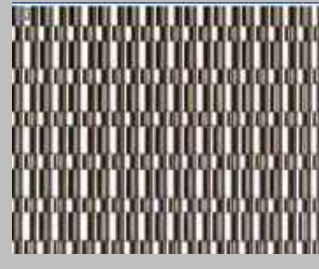
HY-4215-SCC

Material: Stainless steel
Warp Diameter: 1.5mm
Warp pitch: 6.7mm
Weft Diameter: 2mm x 4
Weft pitch: 8mm
Weight: 14.8kg/m²
Open area: 0%
Mesh thickness: 4.9mm



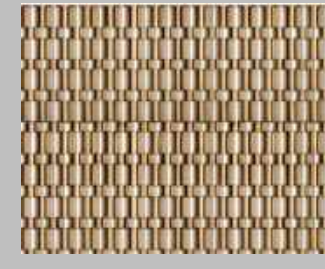
HY-6715-CSCC

Material: Stainless steel & Copper
Warp Diameter: 1.5mm
Warp pitch: 6.7mm
Weft Diameter: 1.5mm x 4
Weft pitch: 8mm
Weight: 15kg/m²
Open area: 0%
Mesh thickness: mm



HY-3656-SCC

Material: Stainless steel
Warp Diameter: 3mm
Warp pitch: 6.5mm
Weft pitch: 0.3mm
Weight: 20kg/m²
Open area: 0%



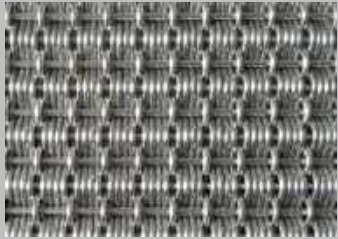
HY-3656T-CSCC

Material: Stainless steel & Copper
Warp Diameter: 3mm
Warp pitch: 6.5mm
Weft Diameter: 12.6 x 1.2mm, 6.3 x 1.2mm
Weft pitch: 15.9mm
Weight: 22.7kg/m²
Open area: 0%
Mesh thickness: 5.5mm



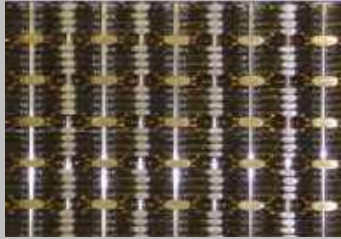
HY-1405-SCC

Material: Stainless steel
Warp Diameter: 2mm
Warp pitch: 5mm
Weft Diameter: 1 x 4mm
Weft pitch: 4mm
Weight: 8.5kg/m²
Open area: 0%
Mesh thickness: 4mm



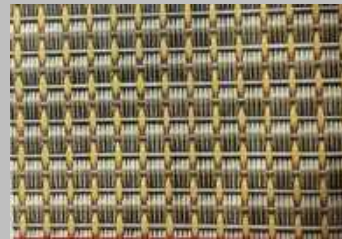
HY-6415-SCC

Material: Stainless steel
Warp Diameter: 1.5mm x 4
Warp pitch: 10mm
Weft Diameter: 2mm
Weft pitch: 7mm
Weight: 16.89kg/m²
Open area: 0%
Mesh thickness: 5mm



HY-6215-CSCC

Material: Stainless steel & Copper
Warp Diameter: 1.5mm
Warp pitch: 4mm
Weft Diameter: 1.45mm x 8.2mm x
Weft pitch: 7.8mm
Weight: 14.32kg/m²
Open area: 0%
Mesh thickness: 5mm



HY-6515-CSCC

Material: Stainless steel & Copper
Warp Diameter: 1.6mm x 1
Warp pitch: 5mm
Weft Diameter: 1.5mm
Weft pitch: 1.5mm
Weight: 12.78kg/m²
Open area: 0%
Mesh thickness: 4.5mm



HY-1548-SCC

Material: Stainless steel
Warp Diameter: 1.5mm
Warp pitch: 5mm
Weft Diameter: 2.5mm
Weft pitch: 3mm
Weight: 16.1kg/m²
Open area: 0%
Mesh thickness: 3.3mm



HY-1548G-SCC

Material: Stainless steel
Warp Diameter: 1.5mm
Warp pitch: 5mm
Weft Diameter: 2.5mm
Weft pitch: 3mm
Weight: 16.1kg/m²
Open area: 0%
Mesh thickness: 3.3mm



HY-1515-SCC

Material: Stainless steel
Warp Diameter: 1.5mm
Warp pitch: 5mm
Weft Diameter: 2mm
Weft pitch: 3mm
Weight: 11.4kg/m²
Open area: 0%
Mesh thickness: 3.2mm



HY-2175-SCC

Material: Stainless steel
Warp Diameter: 2.0mm
Warp pitch: 15mm
Weft Diameter: 2.0mm
Weft pitch: 2.0mm
Weight: 14.5kg/m²
Open area: 0%
Mesh thickness: 6mm



HY-2208B-SCC

Material: Stainless steel
Warp Diameter: 3.5mm x 1mm
Warp pitch: 3.5mm
Weft Diameter: 1.5mm x 2
Weft pitch: 9mm
Weight: 11.71kg/m²
Open area: 0%
Mesh thickness: 2.3mm



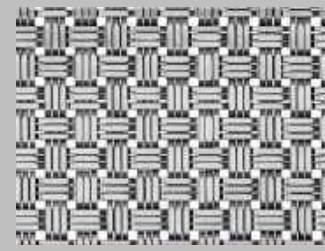
HY-1523-SCC

Material: Stainless steel
Warp Diameter: 1.5mm
Warp pitch: 8.5mm
Weft Diameter: 2.5mm
Weft pitch: 3.88mm
Weight: 13.58kg/m²
Open area: 0%
Mesh thickness: 2.5mm



HY-3125T-BCC

Material: Brass
Flat No.: 1
Flat Diameter: 1 x 10mm
Flat pitch: 13mm
Weft pitch: 12.5kg/m²
Open area: 5.3%
Mesh thickness: 3mm



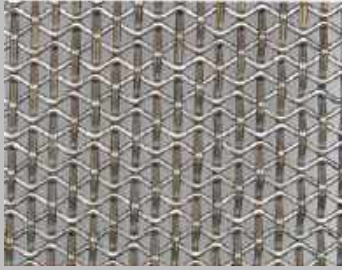
HY-1512-SCC

Material: Stainless steel
Flat No.: 1
Flat Diameter: 0.75 x 2mm
Flat Diameter: 15mm
Weft pitch: 6.5kg/m²
Open area: 9.2%
Mesh thickness: 1.8mm



HY-3411-SCC

Material: Stainless steel
Flat No.: 1
Flat Diameter: 1.1 x 3.4mm
Weft pitch: 6.6mm
Weight: 11.55kg/m²
Open area: 24%
Mesh thickness: 2.5mm



HY-5211-SCC

Material: Stainless steel
 Weftpitch: 5mm
 Warp Diameter: 1.2mm x 2
 Warp pitch: 22.5mm
 Weft Diameter: 2mm



HY-5211G-SCC

Material: Stainless steel
 Weftpitch: 5mm
 Warp Diameter: 1.2mm x 2
 Warp pitch: 22.5mm
 Weft Diameter: 2mm



HY-5213-SCC

Material: Stainless steel
 Weftpitch: 5mm
 Warp Diameter: 1.2mm x 2
 Warp pitch: 22.5mm
 Weft Diameter: 2mm



HY-2413-SCC

Material: Stainless steel
 Flat No.s: 2
 Flat Diameter: 1mm x 2.5mm
 Mesh thickness: 2.5mm



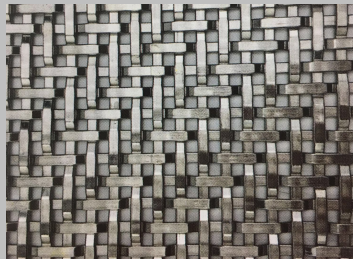
HY-2322-SCC

Material: Stainless steel
 Weftpitch: 36.75mm
 Warp Diameter: 3.2mm x 2
 Warp pitch: 36.75mm
 Weft Diameter: 3.2mm x 2



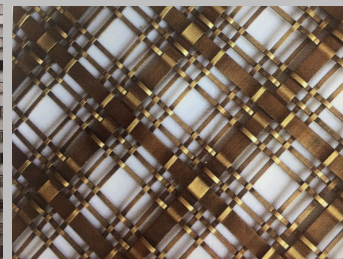
HY-4005-SCC

Material: Stainless steel
 Flat No.s: 2
 Flat Diameter: 5mm x 1.1mm
 Flat pitch: 40mm



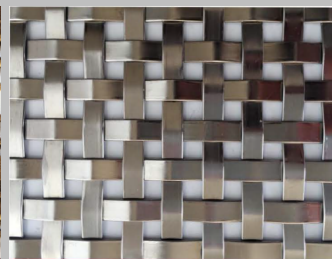
HY-TW01-ACC

Material: Aluminum alloy
 Weft pitch: 4.5mm
 Warp Diameter: 4mm x 0.5mm
 Warp pitch: 4.5mm
 Weft Diameter: 4mm x 0.5mm



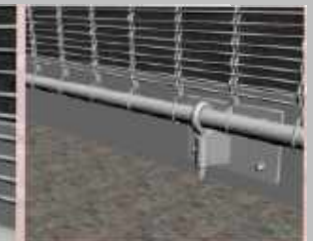
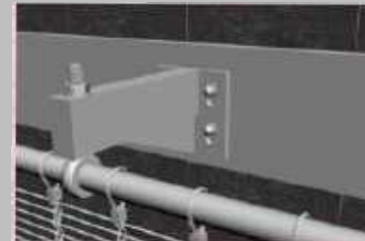
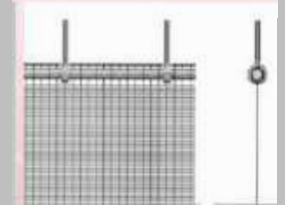
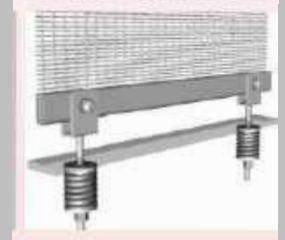
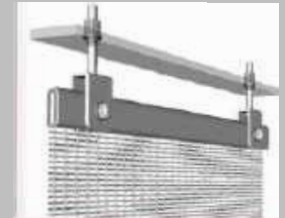
HY-2414G-ACC

Material: Aluminum alloy
 Weft pitch: 7mm
 Warp Diameter: 7mm x 1mm
 Warp pitch: 4.5mm
 Weft Diameter: 7mm x 1mm



HY-2156-SCC

Material: Stainless steel
 Flat No.s: 1
 Warp pitch: 6mm x 1.5mm
 Flat pitch: 12mm





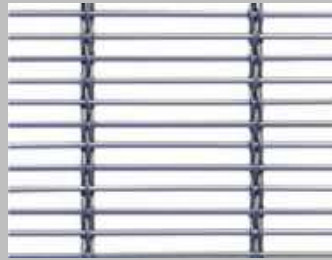
HY-M2752-SCC

Material: Stainless steel
 Cable Diameter: 2.75mm x 2
 Cable pitch: 40mm
 Rod Diameter: 4mm
 R pitch: 14.5mm
 Weight: 9.41kg/m²
 Openarea: 62.5%
 Mesh thickness: 9.5mm



HY-4310-SCC

Material: Stainless steel
 Warp Diameter: 3mm x 2
 War p pitch: 36.5mm
 Weft Diameter: 4mm
 Weft pitch: 15mm
 Weight: 10.34kg/m²
 Openarea: 61.3%
 Mesh thickness: 10.2mm



HY-M3153-SCC

Material: 不锈钢 Stainless steel
 Cable Diameter: 2.75mm x 3
 Cable pitch: 110mm
 Rod Diameter: 4mm
 Rod pitch: 14.5mm
 Weight: 8.3kg/m²
 Openarea: 67%
 Mesh thickness: 9.5mm



HY-M3644-SCC

Material: Stainless steel
 Cable Diameter: 2mm x 4
 Cable pitch: 44mm
 Rod Diameter: 3mm
 Rod pitch: 2.5mm
 Weight: 2.5kg/m²
 Openarea: 54%
 Mesh thickness: 2.5mm



HY-M3624-SCC

Material: Stainless steel
 Cable Diameter: 2mm x 4
 Cable pitch: 50mm
 Rod Diameter: 3mm
 Rod pitch: 6mm
 Weight: 11.2kg/m²
 Openarea: 42%
 Mesh thickness: 7mm



HY-M3676-SCC

Material: Stainless Steel
 Cable Diameter: 2mm x 4
 Cable pitch: 76mm
 Rod Diameter: 3mm
 Rod pitch: 6mm
 Weight: 11.6kg/m²



HY-M2647-SCC

Material: Stainless steel
 Cable Diameter: 0.75mm x 4
 Cable pitch: 26.4mm
 Rod Diameter: 1.5mm
 Rod pitch: 3mm
 Weight: 5.2kg/m²
 Openarea: 65.3%
 Mesh thickness: 3mm



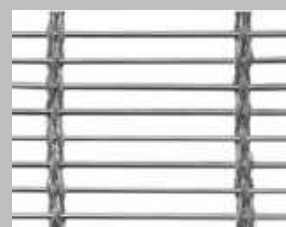
HY-M4235-SCC

Material: Stainless steel
 Cable Diameter: 1mm x 4
 Cable pitch: 36mm
 Rod Diameter: 2mm
 Rod pitch: 3.75mm
 Weight: 7.4kg/m²
 Open area: 41.5%
 Mesh thickness: 4mm



HY-M3631-SCC

Material: Stainless steel
 Cable Diameter: 3mm x 3
 Cable pitch: 100mm
 Rod Diameter: 3mm
 Rod pitch: 6mm
 Weight: 10.8kg/m²
 Open area: 44.4%
 Mesh thickness: 9mm



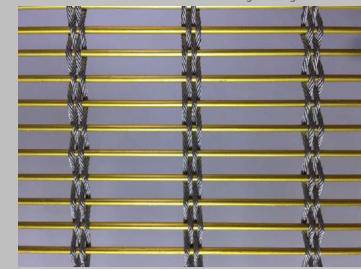
HY-M4528-SCC

Material: Stainless steel
 Cable Diameter: 2.75mm x 3
 Cable pitch: 18.4mm
 Rod Diameter: 4.5mm
 Rod pitch: 14.5mm
 Weight: 10.9kg/m²
 Open area: 60.6%
 Mesh thickness: 10.1mm



HY-M3412-SCC

Material: Stainless steel
 Cable Diameter: 2.75mm x 3
 Cable pitch: 120mm
 Rod Diameter: 4mm
 Rod pitch: 13mm
 Weight: 8.87kg/m²
 Openarea: 64.5%
 Mesh thickness: 9.5mm



HY-M4327-ASCC

Material: Stainless steel & Aluminum
 Cable Diameter: 2.5mm x 4
 Cable pitch: 50mm
 Rod Diameter: 3mm
 Rod pitch: 7mm
 Weight: 5.8kg/m²
 Openarea: 45.7%
 Mesh thickness: 8mm



HY-3831-SCC

Material: Stainless steel
 Warp Diameter: 1.8mm x 3
 Warp pitch: 80mm
 Weft Diameter: 3mm
 Weft pitch: 10mm
 Weight: 6.5kg/m²
 Openarea: 65.3%
 Mesh thickness: 6.6mm



HY-8914-SCC

Material: Stainless steel
 Warp Diameter: 2mm x 3
 War p pitch: 80mm
 Weft Diameter: 3mm
 Weft pitch: 13mm
 Weight: 6.5kg/m²
 Openarea: 71.2%
 Mesh thickness: 9.5mm



HY-M3810-SCC

Material: Stainless steel
 Cable Diameter: 2mm x 3
 Cable pitch: 80mm
 Rod Diameter: 3mm
 Rod pitch: 10mm
 Weight: 6.6kg/m²
 Open area: 64.8%
 Mesh thickness: 7mm



HY-M4365-SCC

Material: Stainless steel
 Cable Diameter: 2.5mm x 4
 Cable pitch: 50mm
 Rod Diameter: 3mm
 Rod pitch: 6mm
 Weight: 12.5kg/m²
 Open area: 40%
 Mesh thickness: 8mm



HY-M3258-SCC

Material: Stainless steel
 Cable Diameter: 2.5mm x 4
 Cable pitch: 80mm
 Rod Diameter: 3mm
 Rod pitch: 6.5mm
 Weight: 10.6kg/m²
 Open area: 47.1%
 Mesh thickness: 8mm



HY-M4362-SCC

Material: Stainless steel
 Cable Diameter: 2mm x 4
 Cable pitch: 80mm
 Rod Diameter: 3mm
 Rod pitch: 7mm
 Weight: 9.29kg/m²
 Openarea: 51.4%
 Mesh thickness: 7mm



HY-M1319-SCC

Material:Stainless steel
Cable Diameter: 1.6mm
Cable pitch: 3.2mm
Rod Diameter: 1.2mm
Rod pitch : 6mm
Weight: 6.5kg/m²
Open area: 38.8%
Mesh thickness: 1.5mm



HY-M2025-SCC

Material:Stainless steel
Cable Diameter: 3mm(*7)
Cable pitch: 5mm
Rod Diameter: 3mm
Rod pitch:1 0mm
Weight: 14.2kg/m²
Open area: 28%
Mesh thickness: 6mm



HY-M6825-SCC

Material:Stainless steel
Cable Diameter: 2.5mm(*7)
Cable pitch: 6mm
Rod Diameter: 2mm
Rod pitch: 8mm
Weight: 8kg/m²
Open area: 43.8%
Mesh thickness: 4.5mm



HY-AH2-SCC

Material:Stainless steel
Wire Diameter: 1.5mm
Hole dia: 10 x 50mm
Weight:3kg/m²
Open area: 76.8%
Mesh thickness: 3.05mm



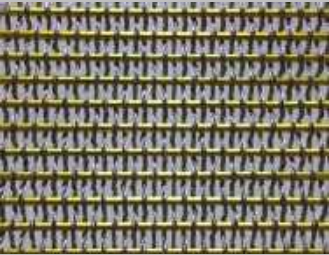
HY-AH3-CCC

Material: Cop per
Wire Diameter: 1.6mm
Hole dia: 7 x 120mm
Weight: 2.5kg/m²
Open area: 76%
Mesh thickness: 3.05mm



HY-M2175T-CCC

Material:Cop per
Cable Diameter: 2mm
Cable pitch: 17.5mm
Rod Diameter: 1.5mm
Rod pitch: 1.55mm
Weight: 11.67kg/m²
Open area: 0%
Mesh thickness: 4mm



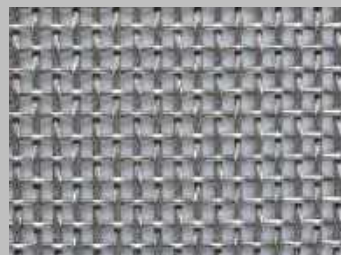
HY-M2368-ASCC

Material: Stainless steel& Aluminum
Cable Diameter: 1.6mm
Cable pitch : 3.2mm
Rod Diameter: 3mm
Rod pitch : 10mm
Weight: 7kg/m²
Open area: 35%
Mesh thickness: 6.8mm



HY-M4325-SCC

Material:Stainless steel
Cable Diameter: 2.5mm
Cable pitch: 5mm
Rod Diameter: 2mm
Rod pitch: 6mm
Weight: 12.2kg/m²
Open area: 33.4%
Mesh thickness:3.5mm



HY-ZH2568-SCC

Material:Stainless steel
Cable Diameter: 2.5mm x 1
Cable pitch: 6mm
Rod Diameter: 2mm
Rod pitch: 8mm
Weight: 9.8kg/m²
Open area: 43.8%
Mesh thickness: 5mm



HY-M2175-SCC

Material:Stainless steel
Cable Diameter: 2mm
Cable pitch: 6mm
Rod Diameter: 1.5mm
Rod pitch: 3.75mm
Weight: 5.2kg/m²
Open area: 44%
Mesh thickness: 5mm



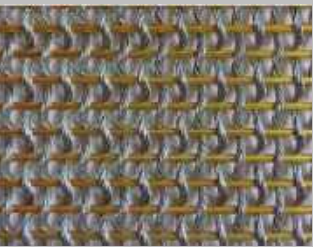
HY-M2174-SCC

Material:Stainless steel
Cable Diameter: 2mm(*119)
Cable pitch: 17.5mm
Rod Diameter: 1.5mm
Rod pitch: 1.6mm
Weight: 10.7kg/m²
Open area: 5%
Mesh thickness: 4mm



HY-M2175T-CCC

Material: Cop per
Cable Diameter: 2mm
Cable pitch: 17.5mm
Rod Diameter: 1.5mm
Rod pitch: 3.75mm
Weight: 5.2kg/m²
Open area: 51%
Mesh thickness: 4mm



HY-M2268-ASCC

Material: Stainless steel& Aluminum
Cable Diameter: 2mm
Cable pitch: 6mm
Rod Diameter: 2mm
Rod pitch: 8mm
Weight: 5.2kg/m²
Open area: 50.1%



HY-M3165T-CCC

Material:Copper
Cable Diameter: 0.48mm x 3
Cable pitch: 3.5mm
Rod Diameter: 0.5mm
Rod pitch: 1.6mm
Weight: 2.3kg/m²
Open area: 40.5%
Mesh thickness: 1.5mm



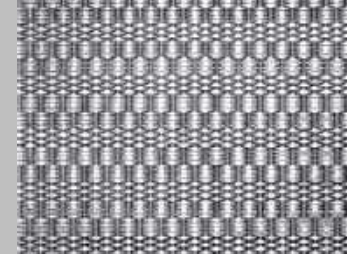
HY-M3165-SCC

Material:Stainless steel
Cable Diameter: 0.45mm x 3
Cable pitch: 3.5mm
Rod Diameter: 0.5mm
Rod pitch: 1.6mm
Weight: 2.1kg/m²
Open area: 40.5%
Mesh thickness: 1.5mm



HY-AG0845-SCC

Material:Stainless steel
Wire Diameter: 0.787mm
Aperture: 5.435mm
Weight: 2.8kg/m²
Open area: 76%
Mesh thickness: 5.2mm



HY-M1445-SCC

Material:Stainless steel
Cable Diameter: 1.5mm x 1
Cable pitch: 5mm
Rod Diameter: 1.5mm
Rod pitch: 1.7mm
Weight: 11.26kg/m²
Open area: 8%
Mesh thickness: 4.5mm



HY-M33-SCC

Material:Stainless steel
Cable Diameter: 1.5mm x 3
Cable pitch: 5mm
Rod Diameter: 2.5mm
Rod pitch: 7.5mm
Weight: 15kg/m²
Open area: 8%
Mesh thickness: 4mm



HY-A1283-SCC

Material: Stainless Steel
Spiral Dia: 1.2mm
Spiral Pitch: 8mm
Cross rod Dia: 1.3mm
Cross rod Pitch: 13mm
Weight: 3.5kg/m2
Open Area: 63%
Mesh thickness: 7.5 mm



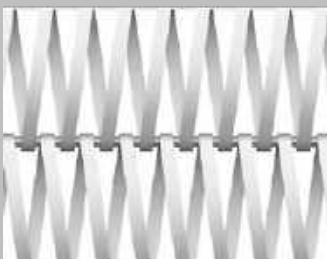
HY-A1615-SCC

Material: Stainless Steel
Spiral Dia: 1.2mm
Spiral Pitch: 8mm
Cross rod Dia: 1.2mm
Cross rod Pitch: 14mm
Weight: 5.0kg/m2
Open Area: 64%
Mesh thickness: 7.5mm



HY-A1622B-CCC

Material: Copper
Spiral Dia: 0.8x2.5mm
Spiral Pitch: 8mm
Cross rod Dia: 1.6mm
Cross rod Pitch: 16mm
Weight: 7.0kg/m2
Open Area: 54%
Mesh thickness: 8mm



HY-A5016-SCC

Material: Stainless Steel
Spiral Dia: 1.2mm x 6mm
Spiral Pitch: 15mm
Cross rod Dia: 5mm
Cross rod Pitch: 50mm
Weight: 12.5kg/m2
Open Area: 18%
Mesh thickness: 10mm



HY-A2515-ICC

Material: Iron
Spiral Dia: 2.2mm
Spiral Pitch: 15mm
Cross rod Dia: 2.2mm
Cross rod Pitch: 25mm
Weight: 5.25kg/m2
Open Area: 64.4%
Mesh thickness: 7.5mm



HY-A2624-SCC

Material: Stainless Steel
Spiral Dia: 2.6mm
Spiral Pitch: 22.5mm
Cross rod Dia: 2.6mm
Cross rod Pitch: 24.3mm
Weight: 4.06kg/m2
Open Area: 68.7%
Mesh thickness: 7.5mm



HY-A3245B-SCC

Material: Stainless Steel
Spiral Dia: 3.2mm
Spiral Pitch: 20mm
Cross rod Dia: 3.5mm
Cross rod Pitch: 40mm
Weight: 9.3kg/m2
Open Area: 55%
Mesh thickness: 6mm



HY-A3264B-SCC

Material: Stainless Steel
Spiral Dia: 3.2mm
Spiral Pitch: 38mm
Cross rod Dia: 3mm
Cross rod Pitch: 64.5mm
Weight: 5.6kg/m2
Open Area: 69%
Mesh thickness: 6.5mm



HY-A3338B-SCC

Material: Stainless Steel
Spiral Dia: 1 mm x 7.2mm
Spiral Pitch: 38mm
Cross rod Dia: 3mm
Cross rod Pitch: 30mm
Weight: 5.3kg/m2
Open Area: 80%
Mesh thickness: 6.5mm

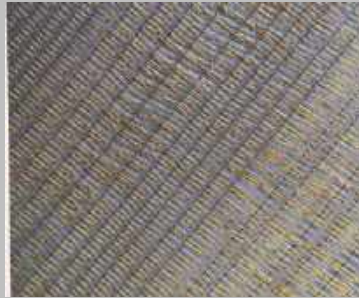




HY-R-01-HYD



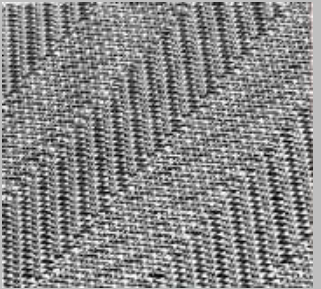
HY-R-02-HYD



HY-R-03-HYD



HY-R-04-HYD



HY-R-05-HYD



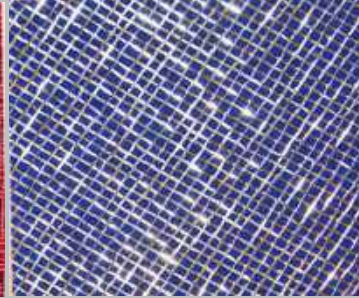
HY-R-06-HYD



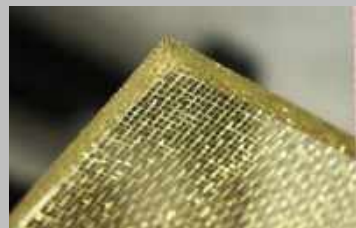
HY-R-07-HYD



HY-R-08-HYD



HY-R-09-HYD





HY-AG1006G-SCC

Material: Stainless steel
 Finish: Plating
 Wire Diameter: 1.0mm
 Aperture: 6mm
 Wire Pitch: 10mm
 Weight: 2.8kg/m²
 Open area: 82.5%
 Mesh thickness: 8mm



HY-AG1242-ACC

Material: Aluminum
 Finish: Plating
 Wire Diameter: 1.2mm
 Aperture: 4.2mm
 Wire Pitch: 8mm
 Weight: 2.1kg/m²
 Open area: 72.9%
 Mesh thickness: 6.8mm



HY-AG1250-ACC

Material: Aluminum
 Finish: Plating
 Wire Diameter: 1.2mm
 Aperture: 5mm
 Wire Pitch: 9mm
 Weight: 1.7kg/m²
 Open area: 76.3%
 Mesh thickness: 7.4mm



HY-AG1260-ACC

Material: Aluminum
 Finish: Plating
 Wire Diameter: 1.2mm
 Aperture: 6mm
 Wire Pitch: 10mm
 Weight: 1.4kg/m²
 Open area: 79.2%
 Mesh thickness: 8.4mm



HY-AG1500-ACC

Material: Aluminum
 Finish: Plating
 Wire Diameter: 1.0mm
 Aperture: 5mm
 Wire Pitch: 9mm
 Weight: 1.1kg/m²
 Open area: 80%
 Mesh thickness: 7mm



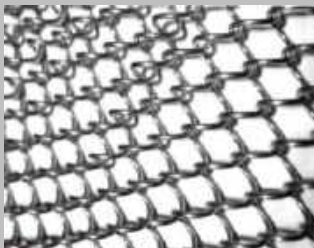
HY-AG1580-ACC

Material: Aluminum
 Finish: Plating
 Wire Diameter: 1.5mm
 Aperture: 8mm
 Wire Pitch: 12mm
 Weight: 1.8kg/m²
 Open area: 79.3%
 Mesh thickness: 11mm



HY-AG0840-ACC

Material: Aluminum
 Finish: Plating
 Wire Diameter: 0.8mm
 Aperture: 4mm
 Wire Pitch: 7.5mm
 Weight: 0.85kg/m²
 Open area: 80.4%
 Mesh thickness: 5.6mm



HY-AG1006-SCC

Material: Stainless Steel
 Finish: Plating
 Wire Diameter: 1.0mm
 Aperture: 6mm
 Wire Pitch: 10mm
 Weight: 2.8kg/m²
 Open area: 82.5%
 Mesh thickness: 8mm



HY-AG1042-ACC

Material: Aluminum
 Finish: Anodizing
 Wire Diameter: 1.0mm
 Aperture: 4.2mm
 Wire Pitch: 8mm
 Weight: 1.3kg/m²
 Open area: 77.1%
 Mesh thickness: 6.2mm



Link mesh is made of spring wire be chain linked. It is a new type of building decoration materials, USES the high quality stainless steel wire, carbon steel wire, aluminum wire and other alloy material, through screw set of encoding method establishment, endowed with traditional cloth curtain does not have the refraction effect, make it has the characteristics of the dynamic fashion, combined with the characteristics of its metallic simple sense, for your bedroom, feeling and elegant temperament extraordinary personality noble taste, can make high-grade hotels, restaurants, opera house, exhibition hall is gorgeous. Usually metal drapery is used like curtain with a fullness of 180%-200%. Curtain track (straight track/arc track) and attachments are offered. Designers and architects around the world are creatively using this material for a wide range of applications.

© STAINLESS STEEL CABLE ROPE MESH

Stainless steel cable mesh material is used high quality stainless steel wire cable, the stainless steel grade includes type 304, type 304 L, type 316, type 316L. The structures of the stainless steel wire cable have 7 x 7 and 7 x 19

Stainless steel cable mesh is transparent and innovative. Wire cable mesh can be used in all kinds of applications including balustrades on bridges and staircases, flexible zoo enclosures, large barrier fences, and building facade trellis systems



FLEXIBLE STAINLESS STEEL CABLE MESH(FERRULED TYPE)

Item No s	Cable diameter		Mesh Opening(W x H)		Normal Break
	inch	mm	inch	mm	lbs
HY-3212K	1/8	3.2	4.75 x 8.23	120 x 207.8	1,600
HY-3210K	1/8	3.2	4 x 6.9	102 x 176.7	1,600
HY-3290K	1/8	3.2	3.55 x 6.15	90 x 156	1,600
HY-3276K	1/8	3.2	3 x 5.2	76 x 131.6	1,600
HY-3251K	1/8	3.2	2 x 3.46	51 x 88.3	1,600
HY-2410K	3/32	2.4	4 x 6.9	102 x 176.7	920
HY-2490K	3/32	2.4	3.55 x 6.15	90 x 156	920
HY-2476K	3/32	2.4	3 x 5.2	76 x 131.6	920
HY-2460K	3/32	2.4	2.4 x 4.16	60 x 104	920
HY-2451K	3/32	2.4	2 x 3.46	51 x 88.3	920
HY-2076K	5/64	2.0	3 x 5.2	76 x 131.6	676
HY-2060K	5/64	2.0	2.4 x 4.16	60 x 104	676
HY-2051K	5/64	2.0	2 x 3.46	51 x 88.3	676

FLEXIBLE STAINLESS STEEL CABLE MESH(KNOTTED TYPE)

Item No s	Cable diameter		Mesh Opening(W x H)	Cable Structure
	mm	mm	mm	
HY-4021B	4.0	210 x 210	7 x 19	
HY-4018B	4.0	180 x 180	7 x 19	
HY-4015B	4.0	150 x 150	7 x 19	
HY-4012B	4.0	120 x 120	7 x 19	
HY-3021B	3.0	210 x 210	7 x 19	
HY-3018B	3.0	180 x 180	7 x 7	
HY-3015B	3.0	150 x 150	7 x 7	
HY-2013B	3.0	120 x 120	7 x 7	
HY-3010B	3.0	100 x 100	7 x 7	
HY-3075B	3.0	75 x 75	7 x 7	
HY-2018B	2.0	180 x 180	7 x 7	
HY-2015B	2.0	150 x 150	7 x 7	
HY-2012B	2.0	120 x 120	7 x 7	
HY-2010B	2.0	100 x 100	7 x 7	
HY-2075B	2.0	75 x 75	7 x 7	
HY-2060B	2.0	60 x 60	7 x 7	
HY-2050B	2.0	50 x 50	7 x 7	
HY-1510B	1.5	100 x 100	7 x 7	
HY-1575B	1.5	75 x 75	7 x 7	
HY-1560B	1.5	60 x 60	7 x 7	
HY-1550B	1.5	50 x 50	7 x 7	



© STAINLESS STEEL CABLE ROPE MESH

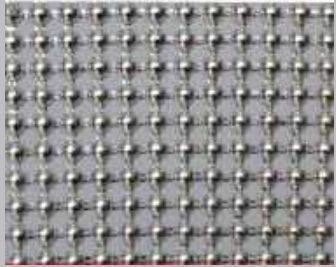
On 2014.11.22 our stainless steel cable rope mesh for high footbridge named "Highline 179" passed through "GUINNESS WORLD RECORDS" It is one 1,318.9 ft long bridge with our cable rope mesh as protection

It is HY's big glory, which encourages us to provide with you best products and best service



Material: Stainless steel 304
Wire dia: 1.5mm
Opening: 30mm*30mm

Material: Stainless steel 304
Wire dia: 1.2mm
Opening: 20mm*20mm



HY-B-A-HYD

Material: Aluminum Alloy
Size: ϕ 4mm



HY-B-B-HYD

Material: Aluminum Alloy
Size: ϕ 4mm



HY-B-C-HYD

Material: Aluminum Alloy
Size: ϕ 3mm



HY-B-D-HYD

Material: Aluminum Alloy
Size: ϕ 2mm



HY-B-E-HYD

Material: Aluminum Alloy
Size: ϕ 3mm



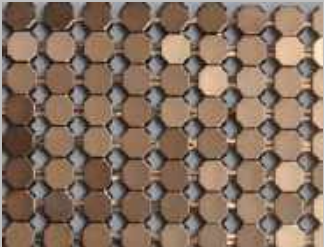
HY-B-F-HYD

Material: Aluminum Alloy
Size: ϕ 7mm



HY-B-G-HYD

Material: Aluminum Alloy
Size: ϕ 4mm



HY-B-H-HYD

Material: Aluminum Alloy
Size: ϕ 6mm



HY-B-I-HYD

Material: 铝 Aluminum Alloy
Size: ϕ 4mm



◎ Chain link curtain

Chain curtain fly screens are made from anodised aluminium links that will not rust. Our chain curtains are available in silver, red, blue, green, black, gold and bronze. They remain a cheap alternative for screening domestic and commercial premises, providing excellent protection against flies, bees, wasps and flying insects

Aluminum chain curtain are for use in the home such as on a domestic kitchen door as well as for commercial use such as on catering kitchen doors, butchers shop or cafe. This type of insect screen gives effective fly control to stop and prevent entry of flies, bluebottles, wasps, mosquitoes, midges and other flying insect bugs



◎ Chain link curtain



◎ SURFACE TREATMENT

HV manufactures most products in mill finish condition. To better serve our customers, we have researched a number of secondary finishes that work well with woven wire mesh for both interior and exterior architectural applications. We can assist in the early design stage by identifying appropriate raw materials and establishing a specification that will produce the desired final finish

◊When appropriate, HV can provide the specified finish and deliver the fabricated materials ready to install. Typical finishes applied to wire mesh to achieve corrosion resistance, color, and reflectivity desired include Electrolytic polishing of stainless steel, powder coat, anodizing, plating, spraying painting and many other copper based alloy finishes by our partner factories

➤ Anodizing

◊Anodizing is an electrolytic passivation process used to increase the thickness of the natural oxide layer on the surface of metal parts. The process is called anodizing because the part to be treated forms the anode electrode of an electrical circuit. Anodizing increases resistance to corrosion and wear, and provides better adhesion for paint primers and glues than does bare metal

➤ Spraying Painting



◊Spraying painting technology make metal meshes have more color selection for colors to fit the whole decoration style to be concerted.

➤ Powder Coating



◊powder coating is economic and easy method for wire mesh surface treatment, it can easily make wire mesh many colors, at same time fully to be protected the mesh, improve corrosion resistance and wearlessness of the mesh, the weak point it that couldn't beshown metal right characteristics on the surface.

◎ SURFACE TREATMENT



Before electrolytic polishing



After electrolytic polishing

➤ Passivation of Stainless Steel

◊In terms of aesthetics and corrosion resistance, stainless steel has all the right characteristics to make for beautiful wire mesh. However, stainless steel looks and performs its best when it is clean. The chromium content in stainless steel combines with oxygen in the air to create a natural passive chromium oxide layer. This chromium oxide layer protects the material from further corrosion. Contaminants of various kinds inhibit this passive oxide layer from developing to its fullest ability leaving the material susceptible to attack. A nitric or citric acid process (passivation) enhances the formation of this oxide layer allowing the stainless steel surfaces to be in an optimal "passive" state

➤ Antique Plated Finish

◊A decorative antique plated finish can really bring out the texture of a woven wire mesh in ways that other coatings cannot. The thin layer of metal does not mask the detail of the wire mesh but rather highlights it. The antique plated finish process introduces a dark oxide layer over top of the bright plated alloy. Then, visual depth is created by physically relieving the high points of the wire mesh allowing the bright plated alloy to show through. A thin layer of lacquer is applied after plating to help preserve the finish from further tarnishing



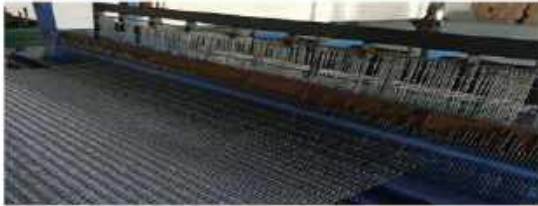
➤ Decorative Plating

◊Decorative plating is an electrodeposition process where a thin layer of brass, nickel, chrome, or copper is deposited on the wire mesh surface



WE ARE MANUFACTURER
PROFESSIONAL FOR WOVEN WIRE MESH

PRODUCTION & PACKING & TRANSPORT





QUALITY
INSPECTION

End of the Report

HY Industry Co.,Ltd.

WIRE MESH PRODUCTS

HY Industry Co.,Ltd.

ADD: 1607, Changjiang Road No.161, Yantai E.T.D.Z. 264006, Shandong, China.

WEBSITE: www.hyindustry.com

EMAIL: marketing@hyindustry.com

TEL: 0086-535-6501817